



CADENAS

Italia Solution Forum 2012
20° Anniversario
CADENAS



CADENAS Technologies AG

CADENAS Group

CADENAS

SETTING STANDARDS

Company



Founded 1992
100% Privately Hold
(CADENAS span.
Process Chains)

Me



Juergen
Heimbach



Employees



300 worldwide



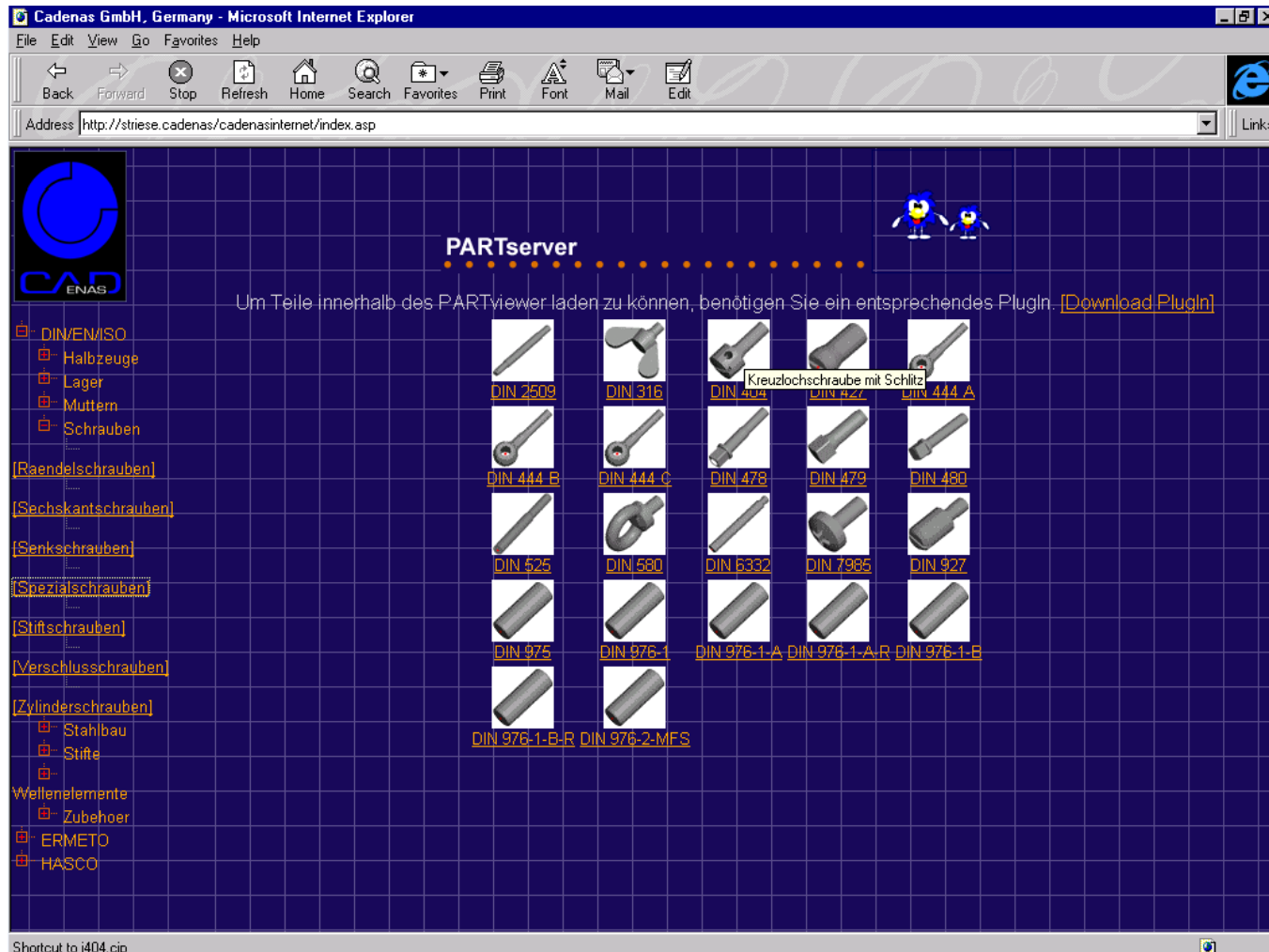


Celebrate with us

CADENAS

SETTING STANDARDS







The Birth Of PARTservers

CADENAS

SETTING STANDARDS

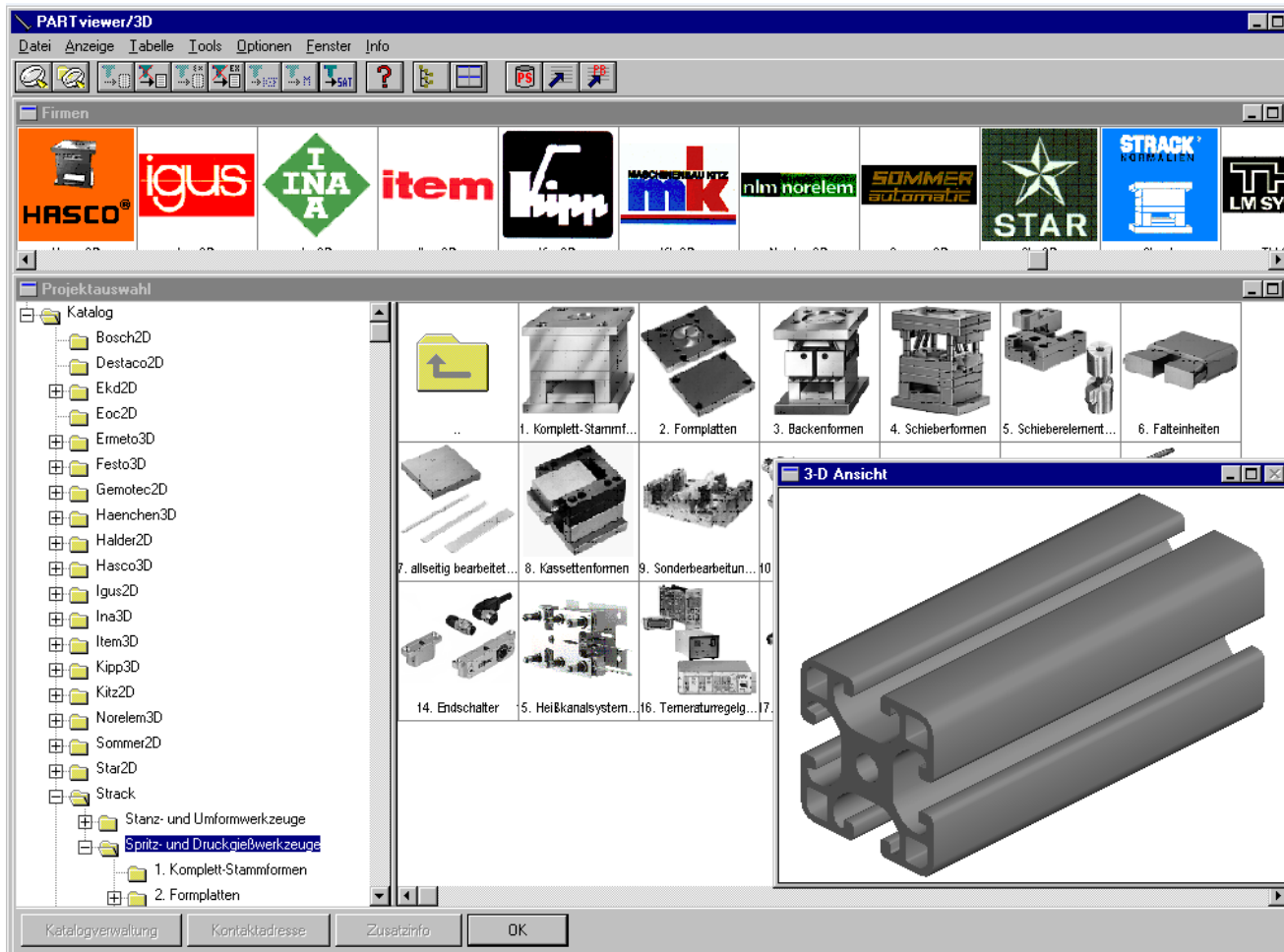




PARTsolutions V1

CADENAS

SETTING STANDARDS





SMART CATALOG



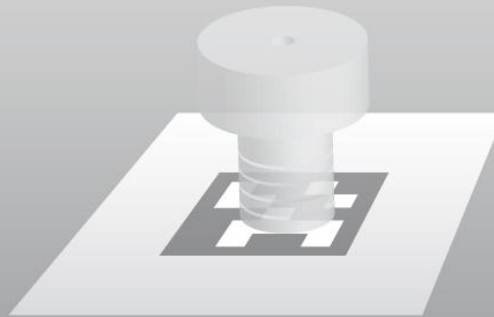
**HANDLE INFORMATION
OVERFLOW**



KNOWLEDGE & CREATIVITY



MOBILE



AUGMENTED REALITY



PURCHINEERING



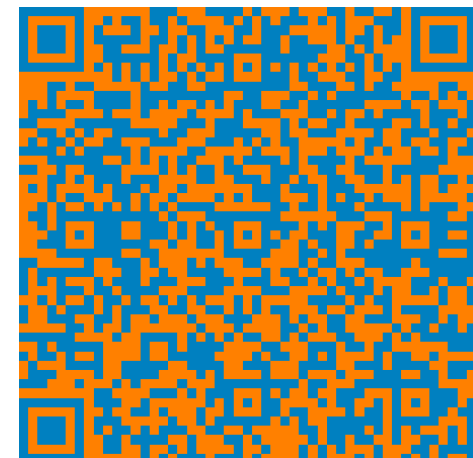
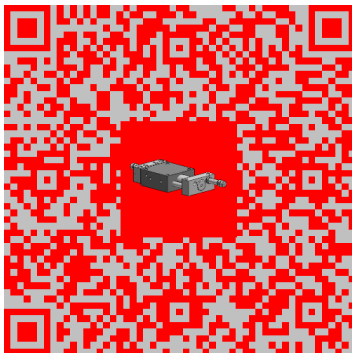
What Is A QR Code ?

How Does a QR Code LookALike ?

CADENAS

SETTING STANDARDS

Information is embedded in a digital code and can start processes on your computers and smart phones.



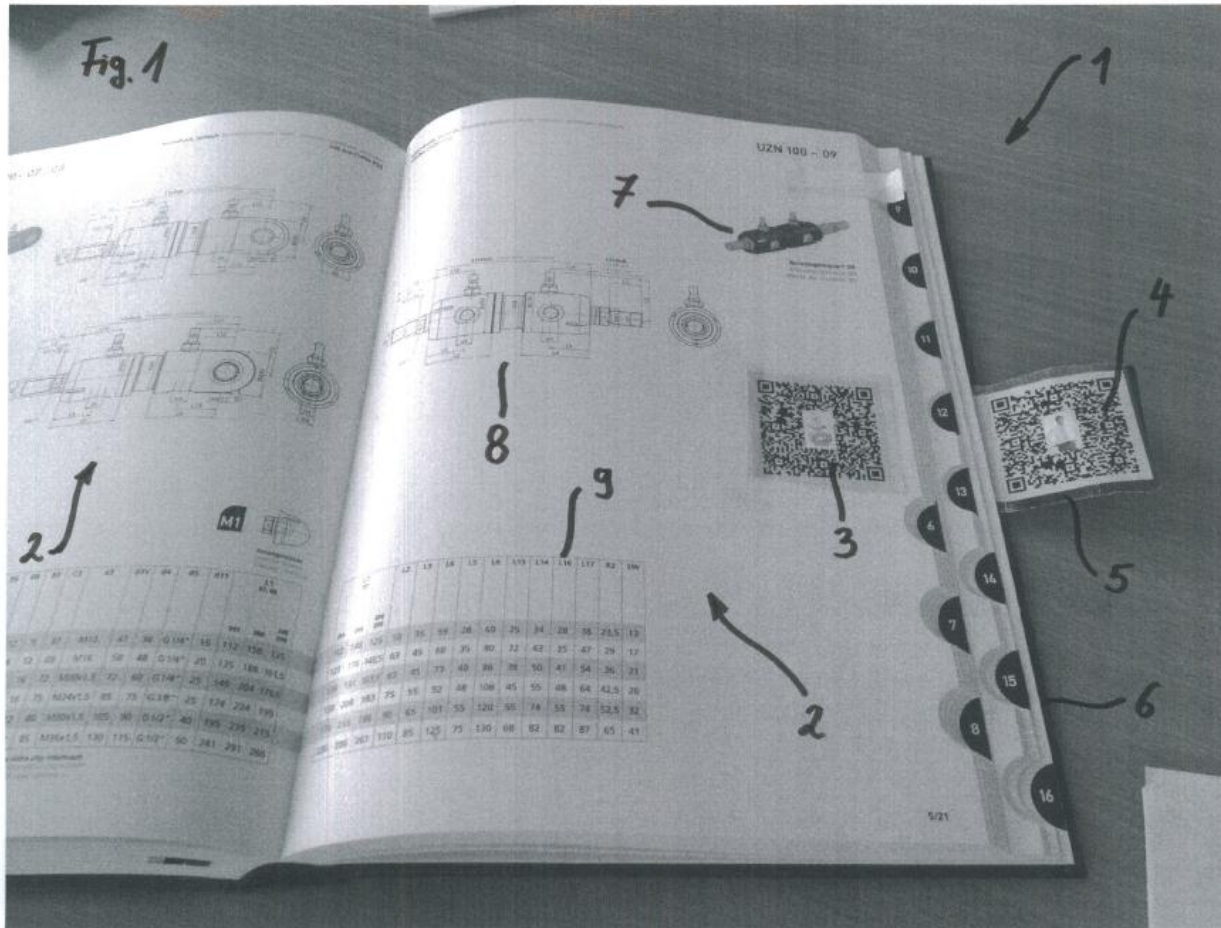


Now You can Download CAD Components direct from your Paper Catalog

CADENAS

SETTING STANDARDS

Patent Pending CADENAS SmartPAPER Technology





COMMON QR CODE contains:

- Name & Dimensions of Component
- Possible Sizes to Select



PERSONAL QR CODE contains:

- Type of information a user wants
RFP, CAD Model, PDF, ...



An integrated **DOUBLE QR CODE READER**

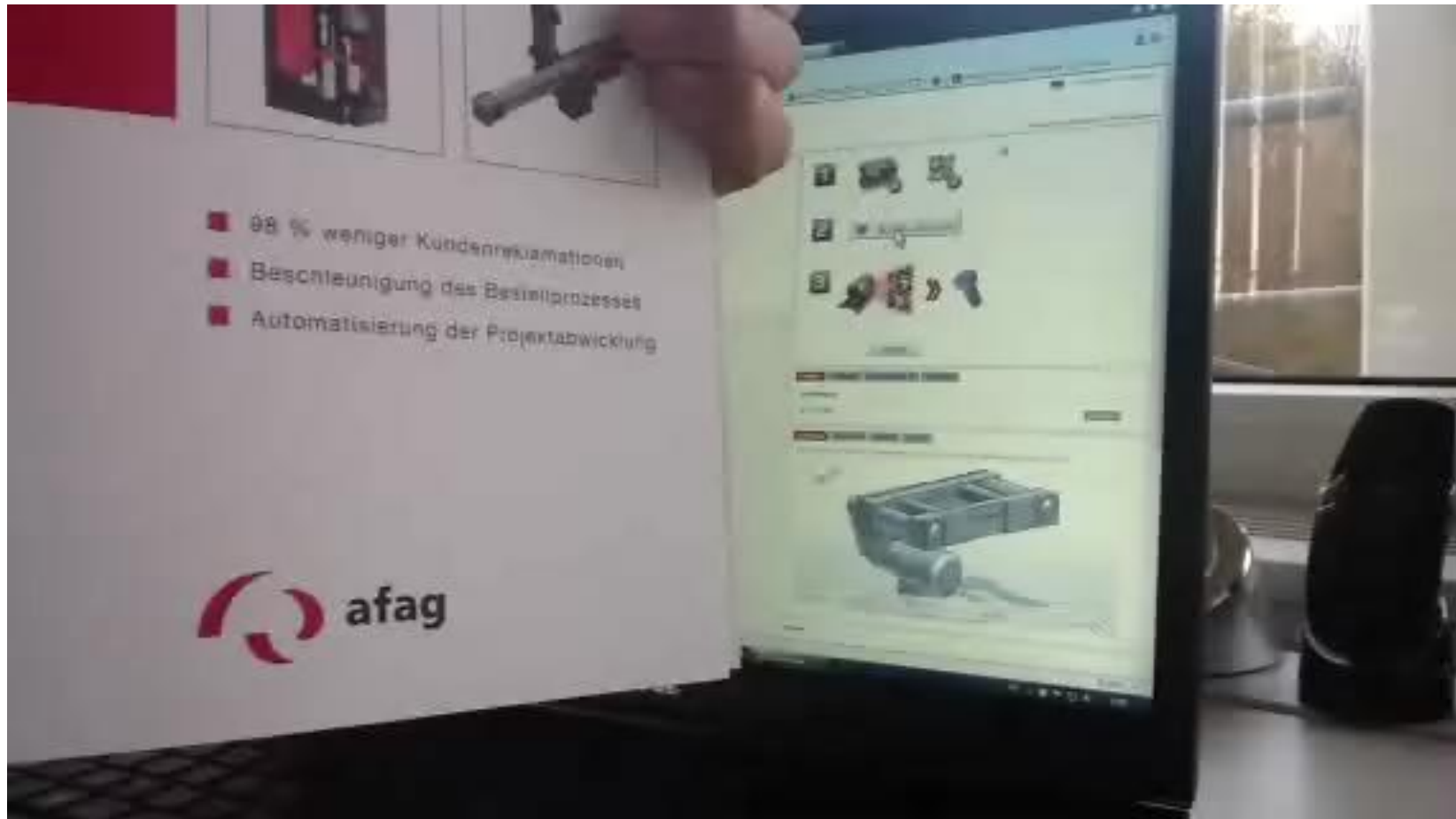
scans and extracts all information.

CAD Models Order Process can be directly started and send to your personally email.

QR Code used to see a CAD Modell in relation to a catalog page

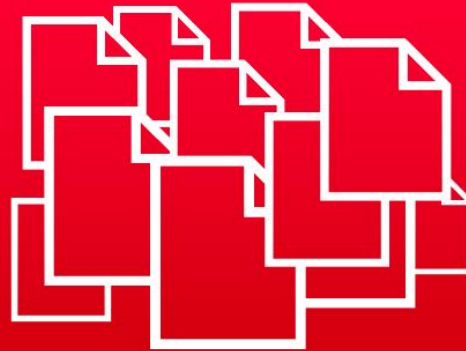
CADENAS

SETTING STANDARDS





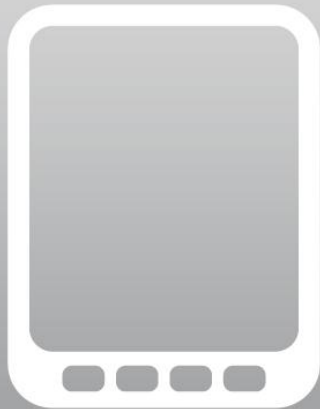
SMART CATALOG



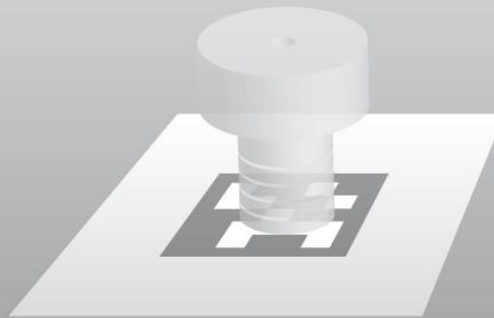
**HANDLE INFORMATION
OVERFLOW**



KNOWLEDGE & CREATIVITY



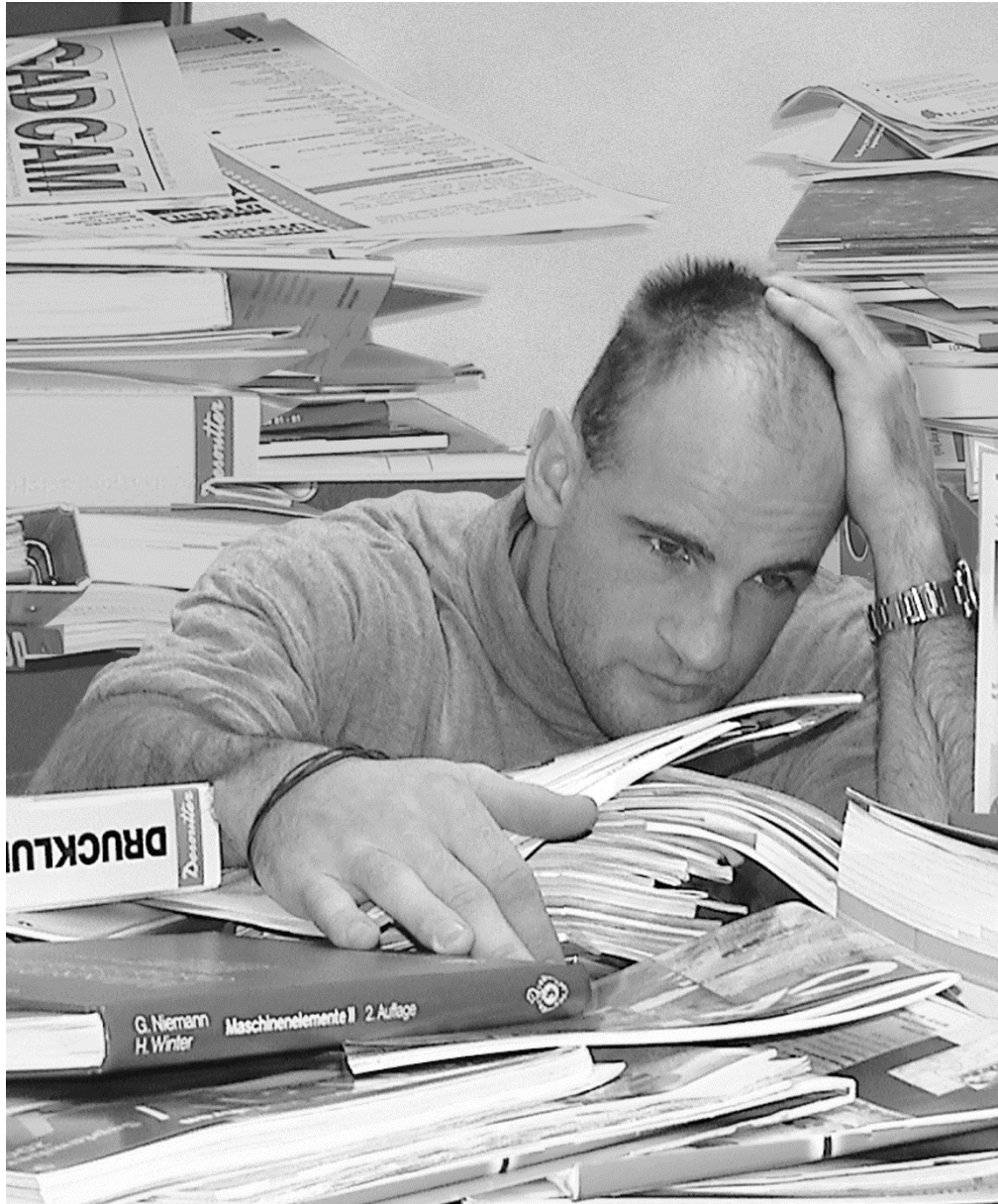
MOBILE



AUGMENTED REALITY



PURCHINEERING

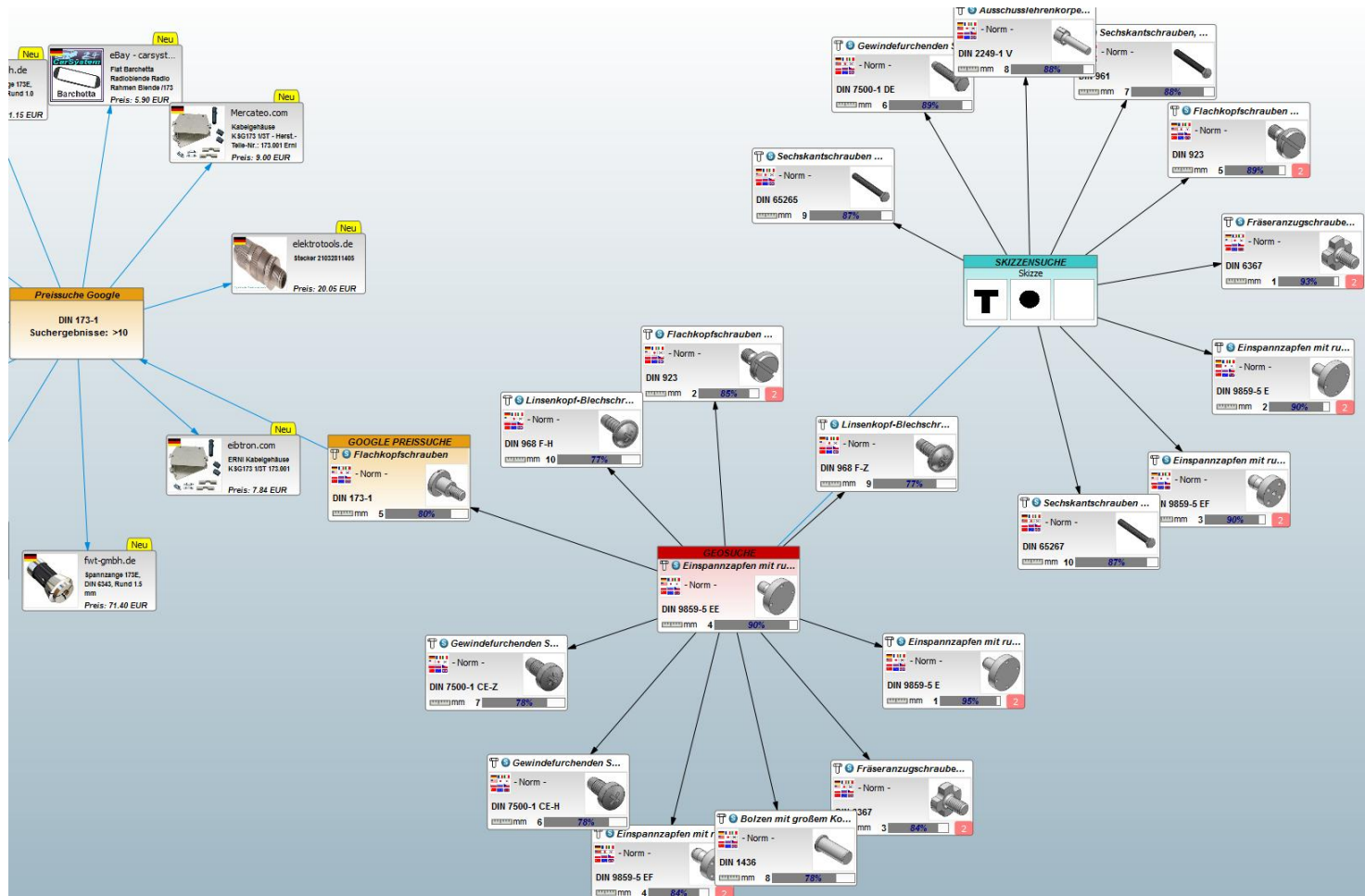




New Search Technologies

CADENAS

SETTING STANDARDS

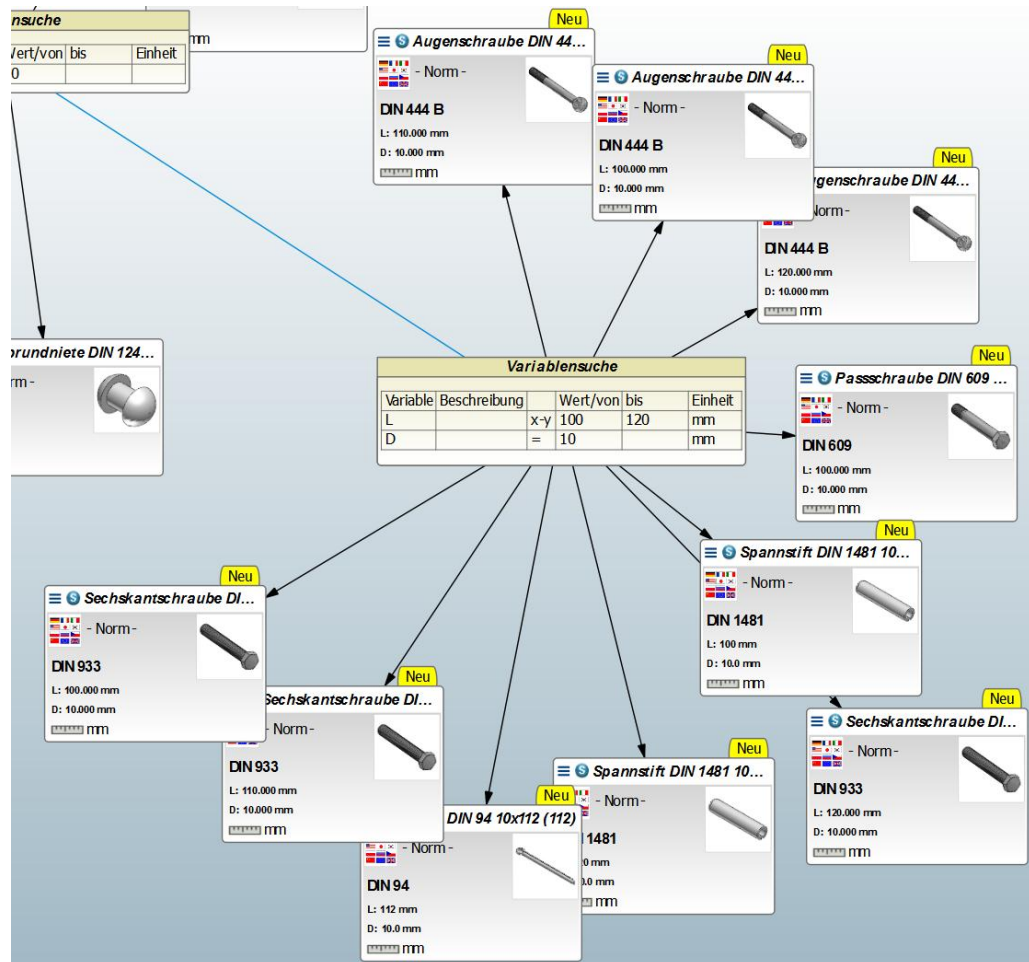




New Search Technologies

CADENAS

SETTING STANDARDS





Simpler & Faster GUIs

Companies can directly embed PARTcommunity technology seamless in their website.

CADENAS

SETTING STANDARDS

95010
Apparatuses swivel and fixed castors standard version

Description
Material: Housing in sheet steel; wheels in standard solid rubber tyre, rim in polyamide
Surface finish: Pressed housing; swivel castor housing with double ball bearing in the swivel head; wheels with side bearing
Note: Wheel axle screwed. Swivel and fixed castor with bolt hole. Wheels grey, non-marking.

Download
You can find more interesting information in the following documents:
Datasheet 95010 Apparatuses swivel and fixed castors standard version 395 kB

Drawings (total overview)

		BEST Bestellnummer	AUSF Ausführung	R1 Durchmesser [mm]	TFK Tragfähigkeit [kg]
○	1	95010-05018	Lenkrolle	50	40
○	2	95010-07525	Lenkrolle	75	60
○	3	95010-10025	Lenkrolle	100	70
▶	4	95010-050181	Bockrolle	50	40
○	5	95010-075251	Bockrolle	75	60
○	6	95010-050182	Lenkrolle mit stop-fix	50	40

ALL-IN-ONE
Technology
allows **ONE CLICK**
CAD Models orders
Email and CAD Format
can be defined
by manufacturer





Simpler & Faster GUIs

Companies can directly embed PARTcommunity technology seamless in their website.

CADENAS

SETTING STANDARDS

norelem HOME COMPANY PRODUCTS IDEAS SERVICE DOWNLOAD NEWS CONTACT

PRODUCTS

95010 Apparatuses swivel and fixed castors standard version

Product overview

- Flexible standard component system
- Systems and components for mechanical engineering and plant engineering
- Measuring and testing components
- TechnoShop norelem
 - Conveyor and movement technology
 - Wheels and rollers
 - 95010 Apparatuses swivel and fixed castors standard version
 - 95010_L Swivel castors
 - 95010_B Fixed castors
 - 95010_LS Swivel castors with stop fit
 - 95012 Sheet steel swivel and fixed castors heavy-duty version
 - 95015 Standard sheet steel castors
 - 95016 Sheet steel swivel and fixed castors standard version
 - 95020 Sheet steel swivel and fixed castors heavy-duty version
 - 95024 Sheet steel swivel and fixed castors standard version
 - 95028 Sheet steel swivel and fixed castors medium-duty version
 - 95030 Sheet steel swivel and fixed castors heavy-duty version
 - 95032 Steel welded swivel and fixed castors heavy-duty version
 - 95034 Sheet steel swivel and fixed castors standard version
 - 95036 Sheet steel swivel and fixed castors heavy-duty version
 - 95040 Sheet steel swivel and fixed castors heavy-duty version
 - 95050 Standard solid rubber tyres on pressed steel rim
 - 95052 Elastic solid rubber tyre

Item description/product images

Description

Material:
Housing in sheet steel; wheels in standard solid rubber tyre, rim in polyamide

Surface finish:
Pressed housing; swivel castor housing with double ball bearing in the swivel head; wheels with slide bearing

Note:
Wheel axle screwed. Swivel and fixed castor with bolt hole. Wheels grey, non-marking.

Download

You can find more interesting information in the following documents:

Datasheet 95010 Apparatuses swivel and fixed castors standard version 395 kB

Drawings (total overview)

Name	Beschreibung
BEST	Bestellnummer
AUSF	Ausführung
RL	Radlagerung
A	Länge
B2	Breite
D	Durchmesser
D1	Durchmesser
H	Höhe
R	Länge
R1	Durchmesser
TFK	Tragfähigkeit
GEW	Gewicht
BS	Beschreibung

ALL-IN-ONE
Technology
allows **ONE CLICK**
CAD Models orders
Email and CAD Format
can be defined
by manufacturer





Simpler & Faster GUIs

Companies can directly embed PARTcommunity technology seamless in their website.

CADENAS

SETTING STANDARDS

The screenshot shows the Norelem website interface. At the top, there is a navigation menu with links for HOME, COMPANY, PRODUCTS, IDEAS, SERVICE, DOWNLOAD, NEWS, and CONTACT. Below the menu, the main content area is divided into several sections:

- PRODUCTS**: A sidebar menu listing various product categories like 'Flexible standard component system', 'Systems and components for mechanical engineering', and 'TechnoShop norelem'.
- 95010 Apparatuses swivel and fixed castors standard version**: The main product page, featuring a search bar, a 'MY NORELEM' login section, and a 'SHOPPING CART' section.
- Description**: A detailed text description of the castor, including material (sheet steel), surface finish (pressed housing), and a note about the wheel axle.
- Download**: A section for downloading documents related to the product, such as a datasheet.
- Drawings (total overview)**: A section containing a 3D CAD model of the castor, which is highlighted with a red border.

ALL-IN-ONE
Technology
allows **ONE CLICK**
CAD Models orders
Email and CAD Format
can be defined
by manufacturer





Simpler GUIs

Companies can directly embed PARTcommunity technology in their website.

CADENAS
SETTING STANDARDS

The screenshot shows the norelem website interface. The main content area displays the product '95010 Apparatuses swivel and fixed castors standard version'. A red box highlights the 'Drawings (total overview)' section, which contains a table of technical specifications for the part number 95010-07525.

Name	Beschreibung
BEST	Bestellnummer
AUSF	Ausführung
RL	Radlagerung
A	Länge
B2	Breite
D	Durchmesser
D1	Durchmesser
H	Höhe
R	Länge
R1	Durchmesser
TFK	Tragfähigkeit
GEW	Gewicht
BS	Beschreibung

ALL-IN-ONE
Technology
allows **ONE CLICK**
CAD Models orders
Email and CAD Format
can be defined
by manufacturer





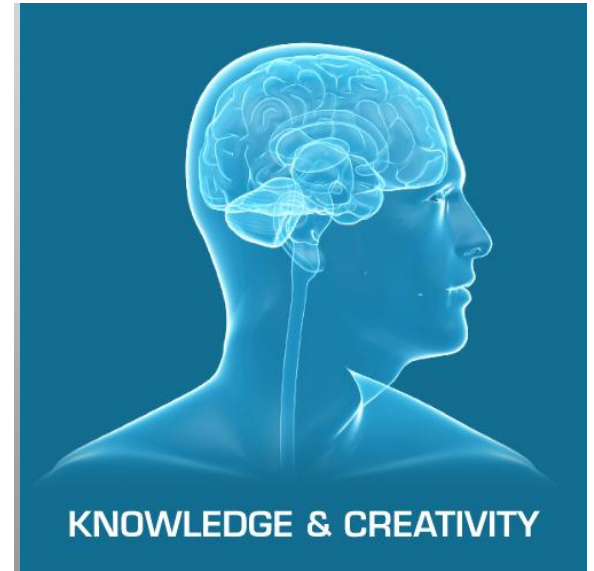
**NEW METHODS TO FIND
AND USE ARE REQUIRED
TO MANAGE THE DAILY
INFORMATION
OVERFLOW**



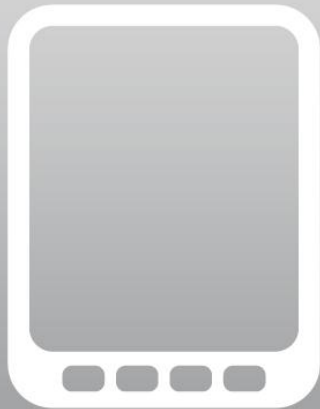
SMART CATALOG



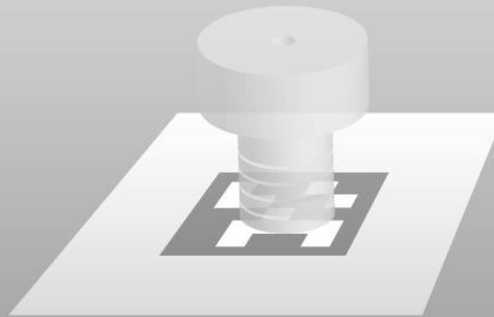
**HANDLE INFORMATION
OVERFLOW**



KNOWLEDGE & CREATIVITY



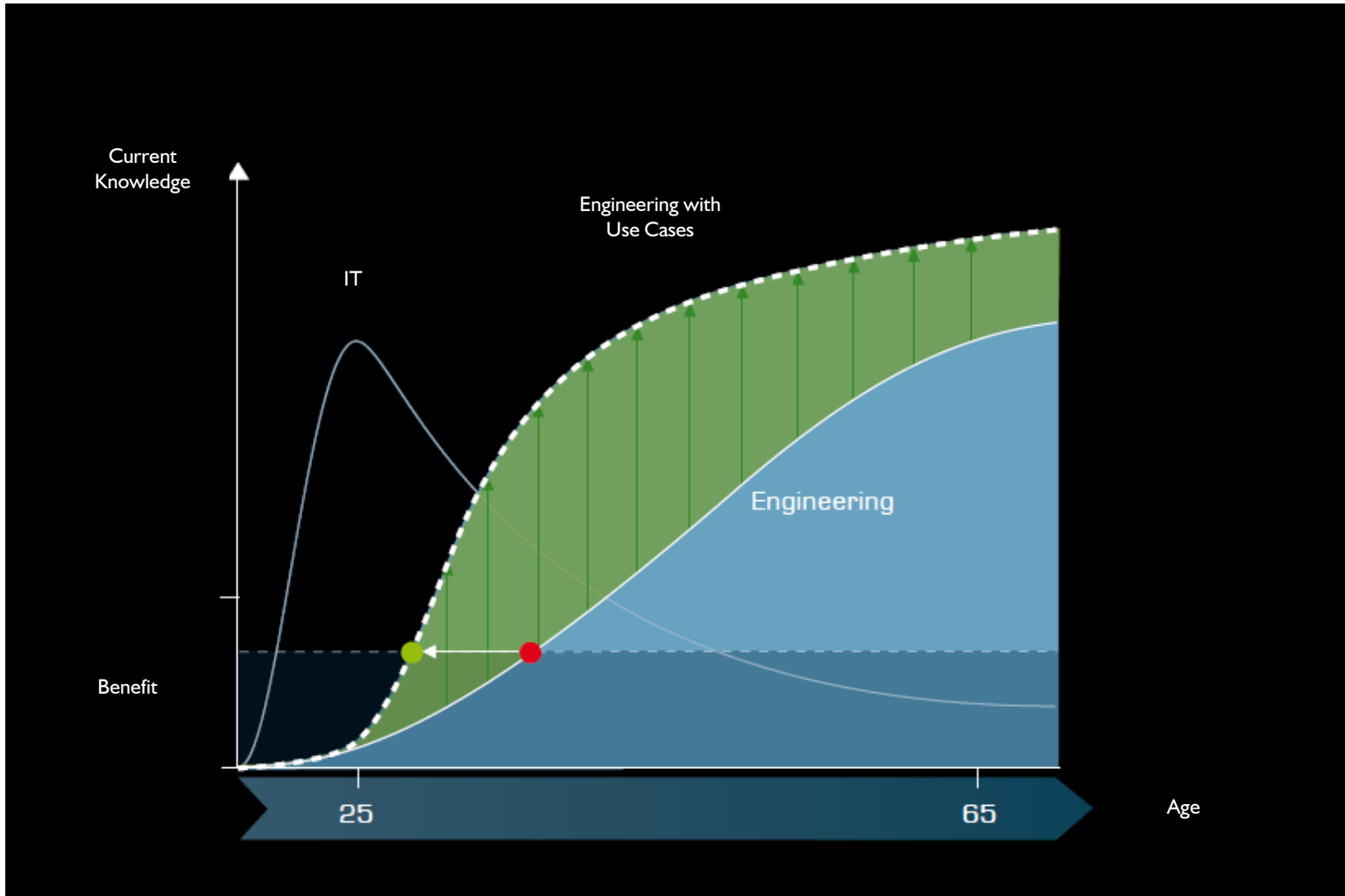
MOBILE



AUGMENTED REALITY



PURCHINEERING



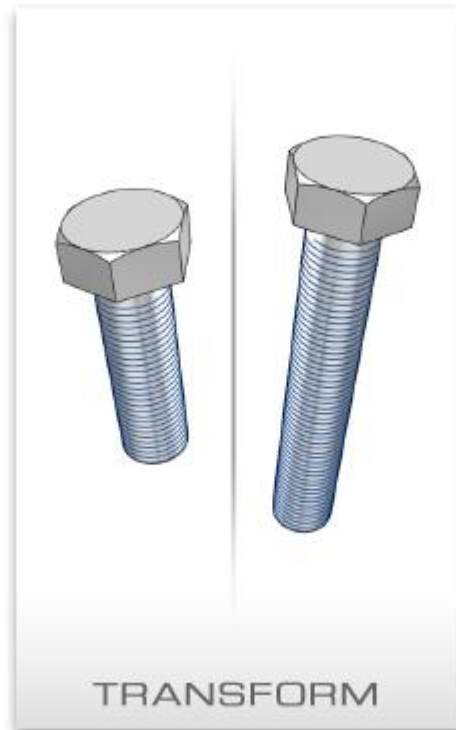
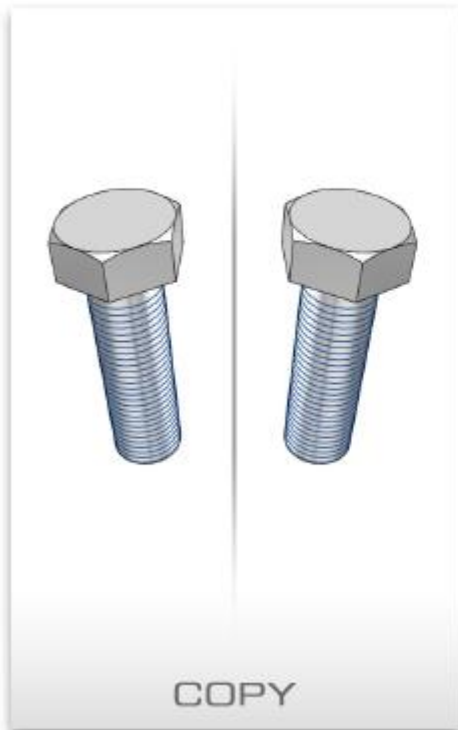


Where Does Engineers Knowledge and Creativity come from ?

CADENAS

SETTING STANDARDS

BASIC ELEMENTS OF CREATIVE ENGINEERING





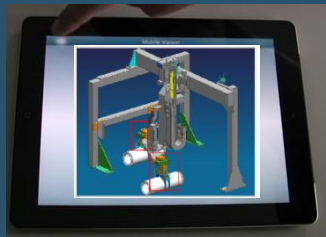
Use Cases

Our Motivation: Building the worlds biggest Engineering Encyclopedia

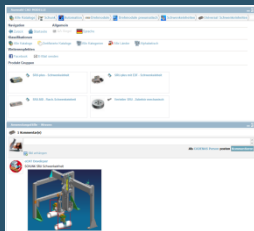
CADENAS

SETTING STANDARDS

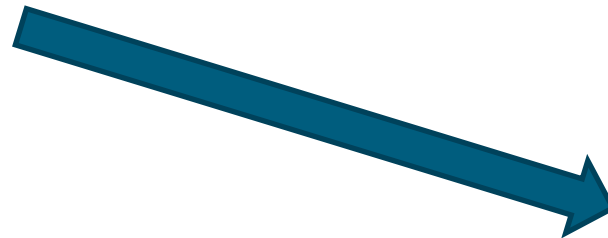
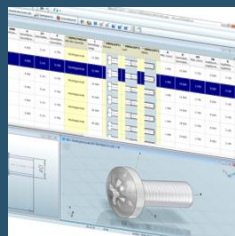
APP



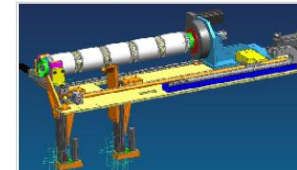
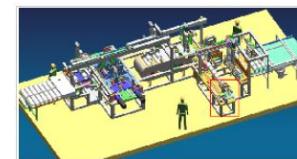
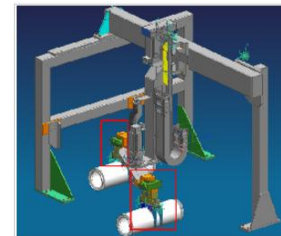
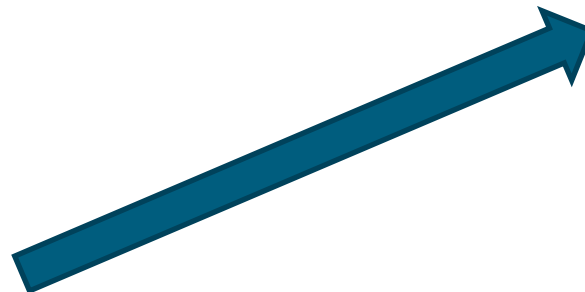
PARTCOMMUNITY/WEB



PARTSOLUTIONS



USER UPLOADS
USE CASES





Use Cases

Our Motivation: Building the worlds biggest Engineering Encyclopedia

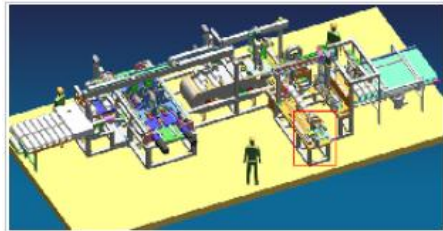
CADENAS

SETTING STANDARDS

USER DOCUMENTS

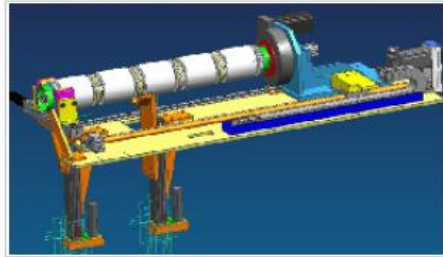
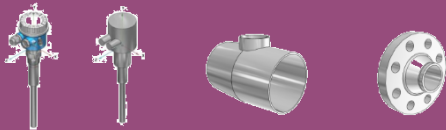
WHAT CAD IS USED ?
CATIA, NX, PRO/E, ...

WHO MADE IT ?
INGEGNERIA UFFICIO
ROBERTO MASSI



WHAT TYPE OF ENGINEERING ?
DISPOTIVO, MACCHINA SPECIALE

WHAT COMPONENTS ARE USED ?



WHAT FUNCTIONALITY IS FOCUSED ?
ACCEDERE, , GIRARE, FISSARE...





Use Cases

Our Motivation: Building the worlds biggest Engineering Encyclopedia

CADENAS

SETTING STANDARDS

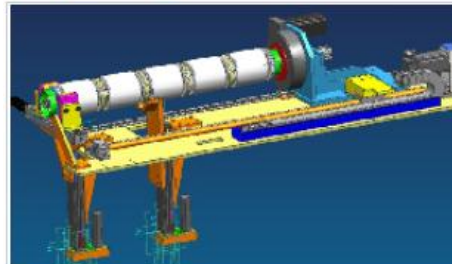
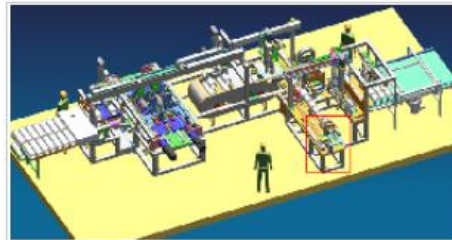
USER BENEFITS

PUBLISHER/ MAGAZINE

Gets content for new publications and reports

ENGINEERS

Benefit from challenges where Financial and other awards can be won.



ENGINEERING SERVICE PROVIDER

Good advertising for his company and finding new customers

CAD PRODUCER

Profits because he can show that his CAD System works for a special type of engineering.

MANUFACTURER

Get feedback for optimization of his components
Get new innovations for new products





First Challenges Are Started !

CADENAS

SETTING STANDARDS



USE CASES FOR MANUFACTURER COMPONENTS BY CADENAS

We are awarding the most interesting use cases!

Host: CADENAS GmbH

Teilnehmer: B2B PARTcommunity members

Task: We are looking for the most interesting use cases in connection with components which are available in the CADENAS' manufacturer catalogs.

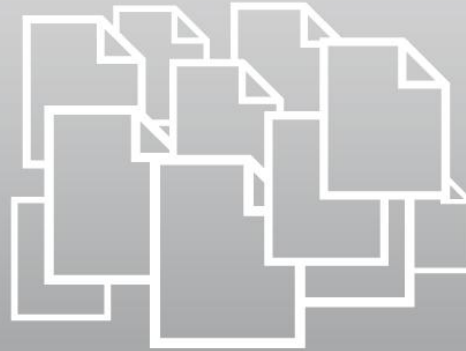
Deadline: 2012-10-15

Price: 3 x 1 coupon from Amazon worth 100 € each

[Discover more »](#)



SMART CATALOG



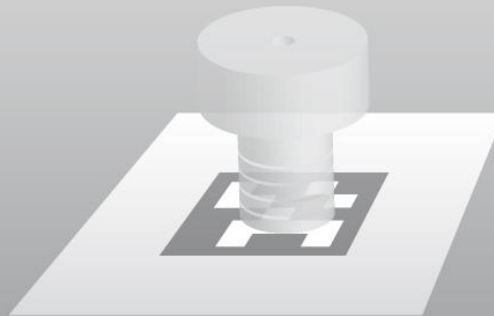
**HANDLE INFORMATION
OVERFLOW**



KNOWLEDGE & CREATIVITY



MOBILE



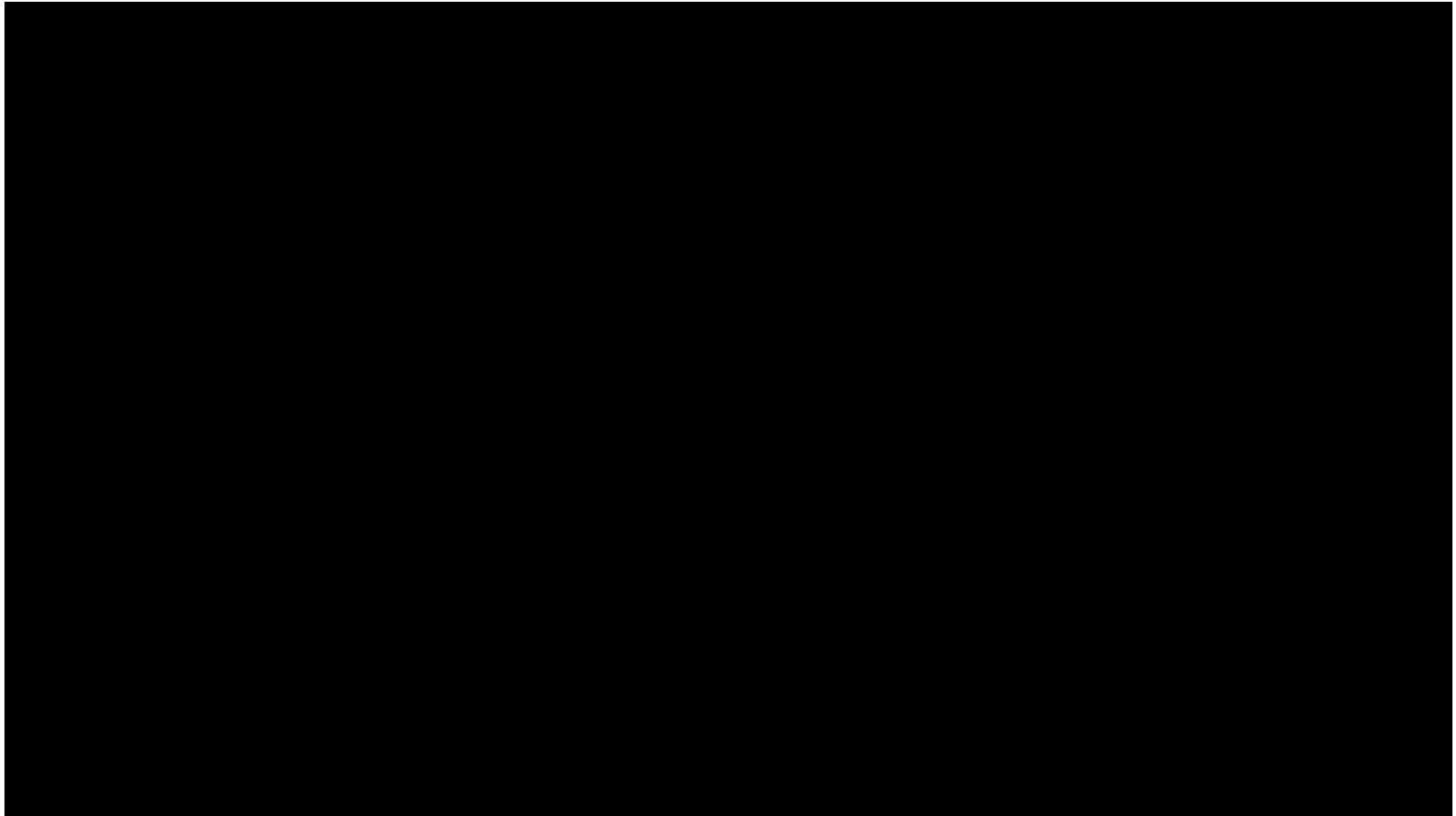
AUGMENTED REALITY



PURCHINEERING

It's time for an **APP!**

When **THIS** target group will have grown your Product Catalog won't work any longer. Think today about tomorrow !





Meetings – Yesterday VS Today

CADENAS

SETTING STANDARDS

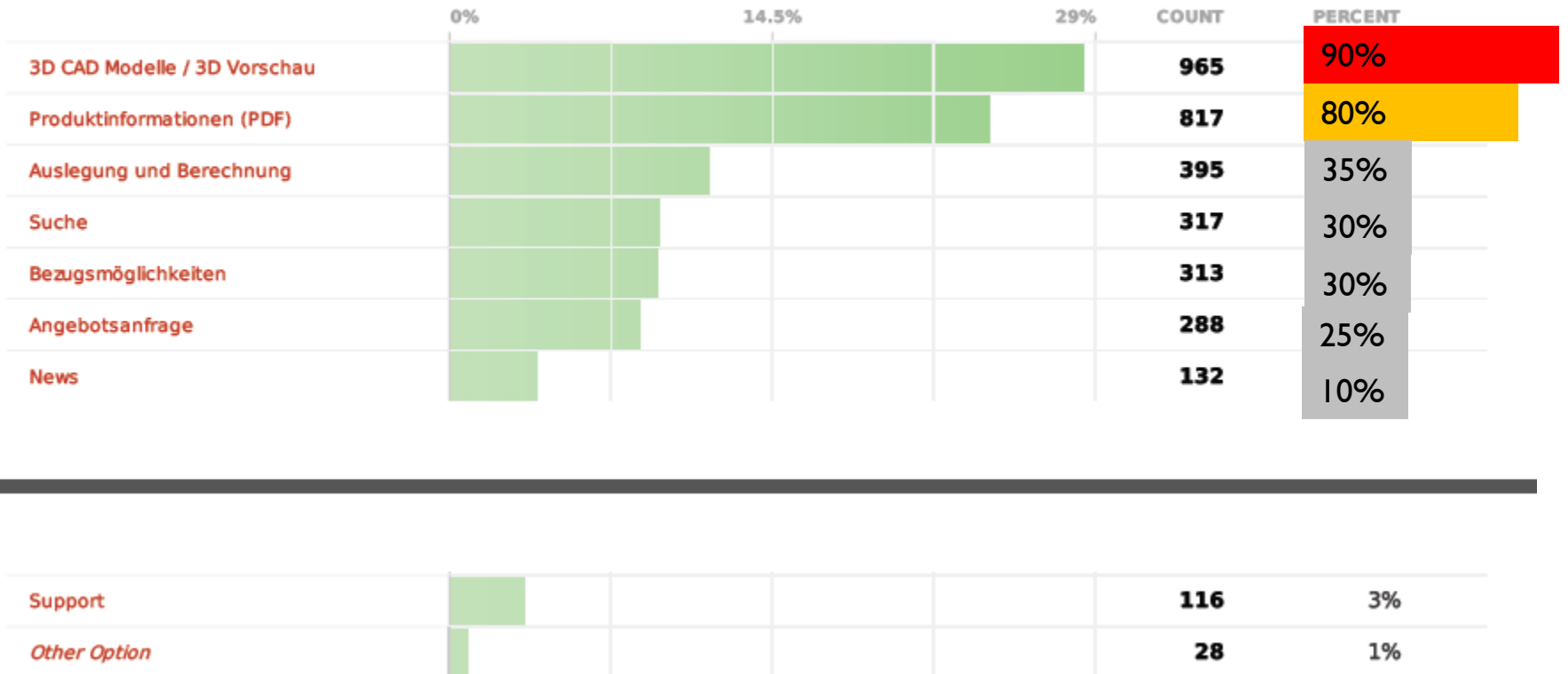


Question
04

Welche Funktionen würden Sie gerne mit einer App nutzen?

Answers
1,108
85%

Skips
200
15%





You already have an APP?

No Problem – You can embed our solution to your APP

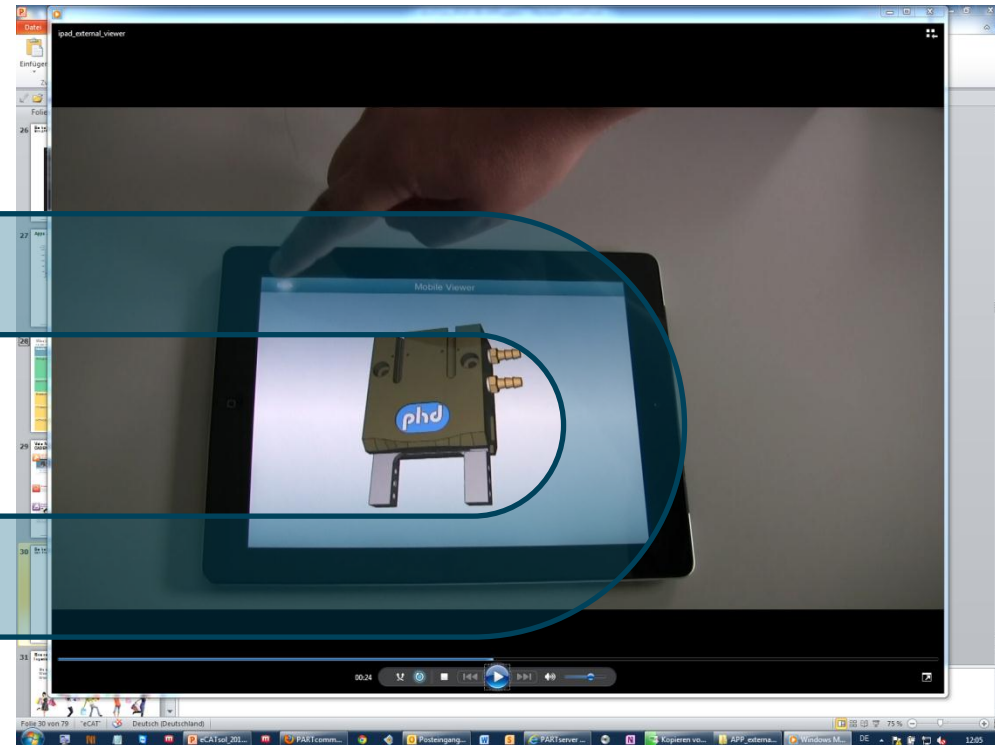


phd
SOLUTIONS FOR INDUSTRIAL AUTOMATION

Overview:
New with force and high speed travel adjustment!
The Series EGRK Electric Gripper brings a new level of performance in electric powered gripping devices. The unit provides exceptional gripping force and moment capacities all in a simple "Plug and Grip" package. High precision jaw movement is maintained over the entire life of the unit using a patent pending, ultra rigid wear compensating, jaw guidance system. The pre-programmed controller is optimized to operate the Gripper at maximum speed and grip force at any position within the jaw travel. PHD's Series EGRK Electric Gripper combines performance, precision, and ease of use at an affordable package price!

Advantages:
Three sizes with either long and short jaw travels, choice of specifying maximum jaw speed or jaw force, available with two-position teachable magnetic switches, quality construction for long life, "Plug and Grip" pre-programmed controller maximizes performance

General Benefits Specs Catalog Delivery Photos



ipad_external_viewer

Mobile Viewer

phd

90:24

Deutsch (Deutschland)

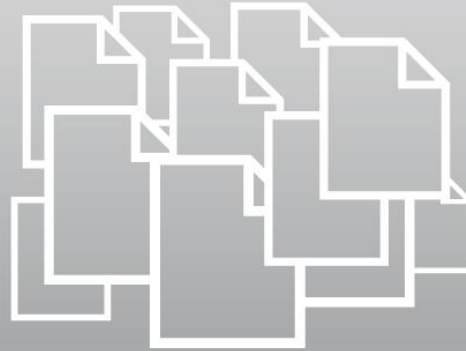
Windows M



**ALL IMPORTANT
INFORMATION AT EVERY
TIME AND EVERY PLACE
AVAILABLE**



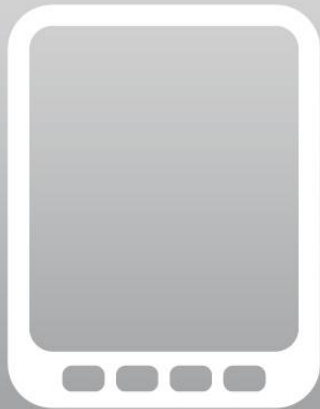
SMART CATALOG



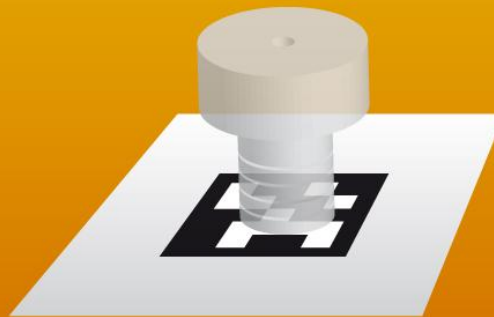
**HANDLE INFORMATION
OVERFLOW**



KNOWLEDGE & CREATIVITY



MOBILE



AUGMENTED REALITY



PURCHINEERING



What is AR ?

Augmented Reality – A Standard Since Years

CADENAS

SETTING STANDARDS





Used For Marketing And other purposes ...

CADENAS

SETTING STANDARDS



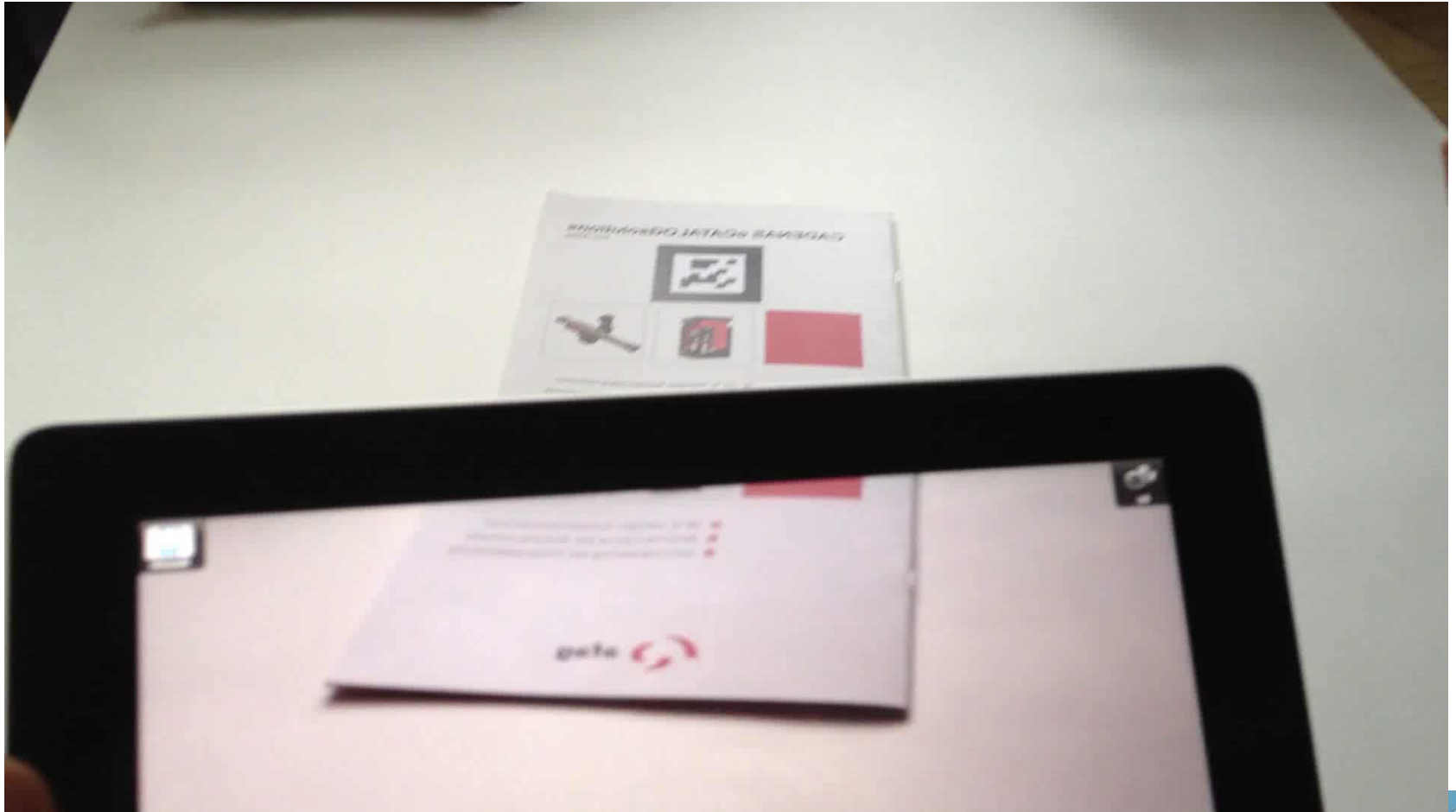


Augmented Reality

... connects Paper and Digital
Let Paper be a Touch Screen

CADENAS

SETTING STANDARDS





Google Working on Android-Powered Glasses with Heads-Up Display?

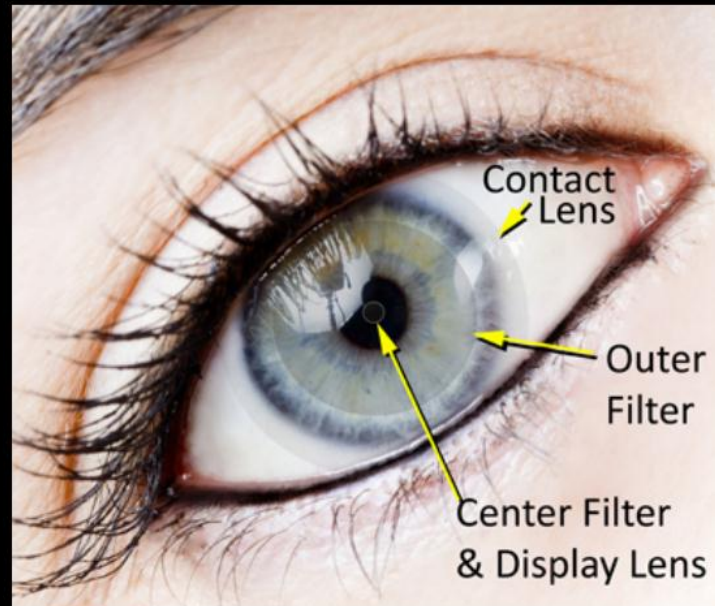
File under: **News**

By: [Stephen Schenck](#) | 5:29 PM 6-Feb-12 | [0 Comments](#)



DARPA RESEARCHERS DESIGN EYE-ENHANCING VIRTUAL REALITY CONTACT LENSES

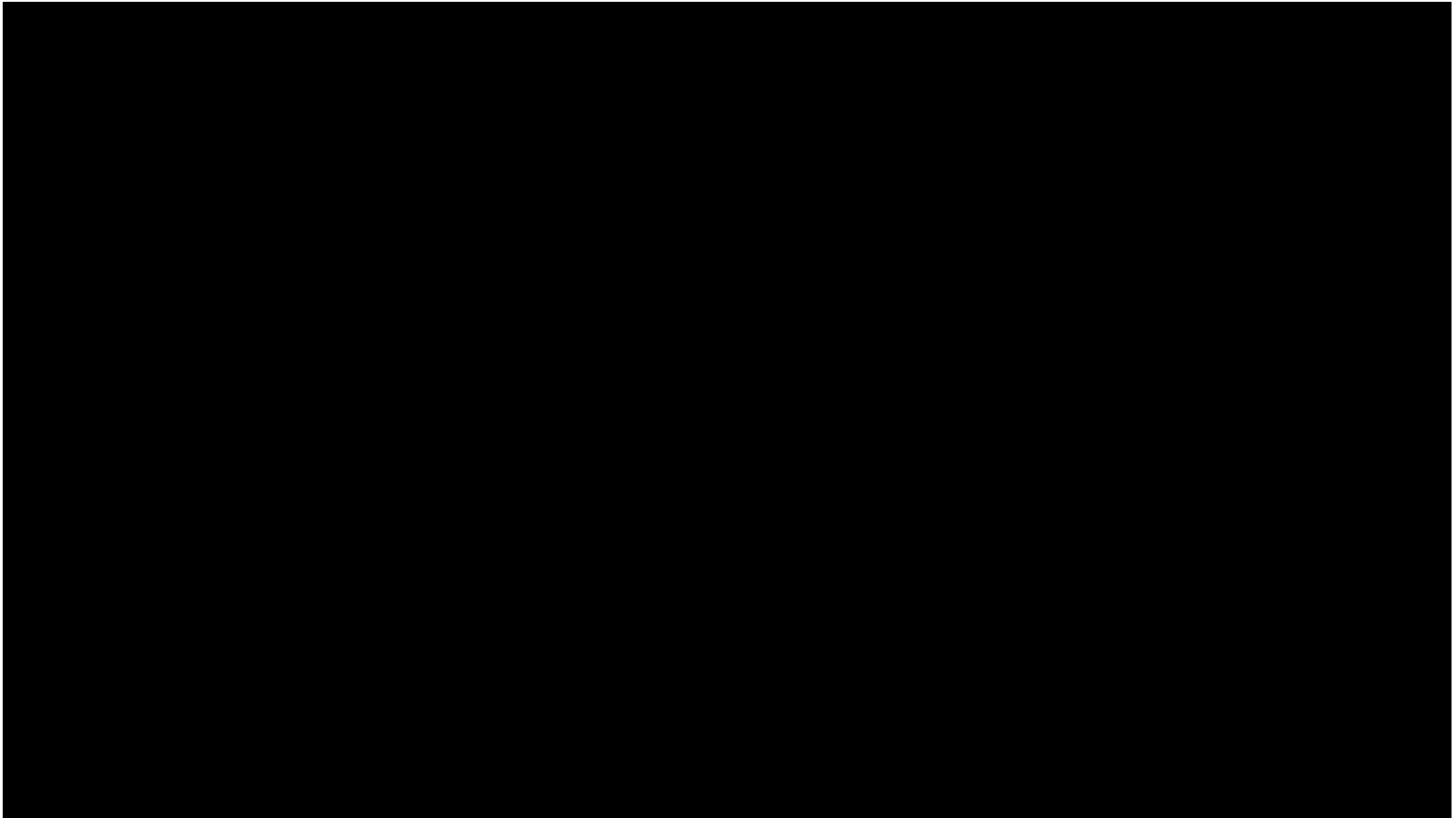
January 31, 2012





CADENAS

SETTING STANDARDS





THE AUGMENTATION OF OUR ENVIRONMENT WITH IMPORTANT DATA MAKES THE WORLD MORE TRANSPARENT FOR US



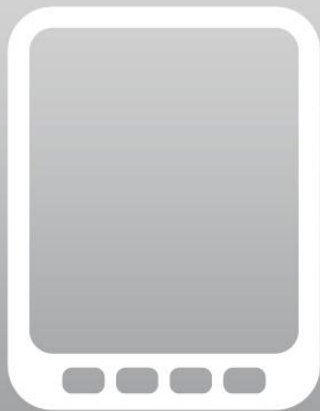
SMART CATALOG



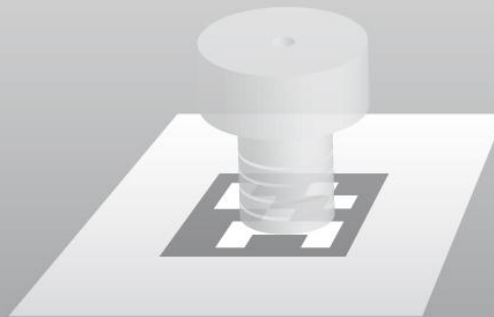
**HANDLE INFORMATION
OVERFLOW**



KNOWLEDGE & CREATIVITY



MOBILE



AUGMENTED REALITY



PURCHINEERING



PURCHINEERING

CADENAS

SETTING STANDARDS



PURCHINEERING



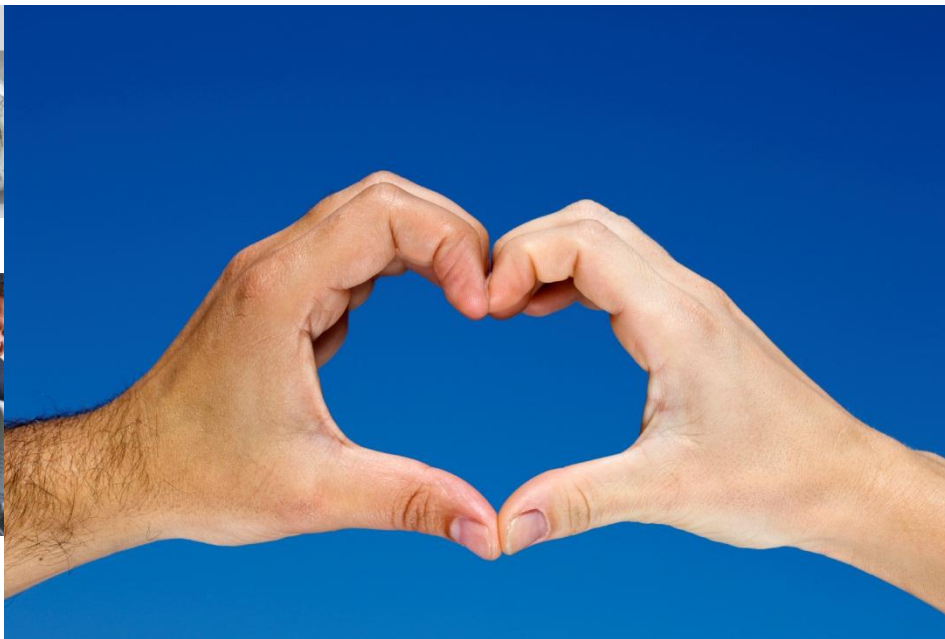
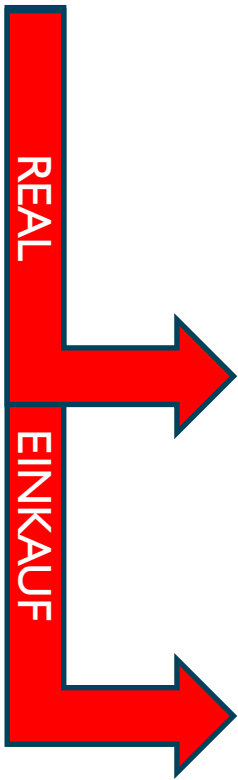
Why PURCHINEERING ?

CADENAS

SETTING STANDARDS



KUNDE



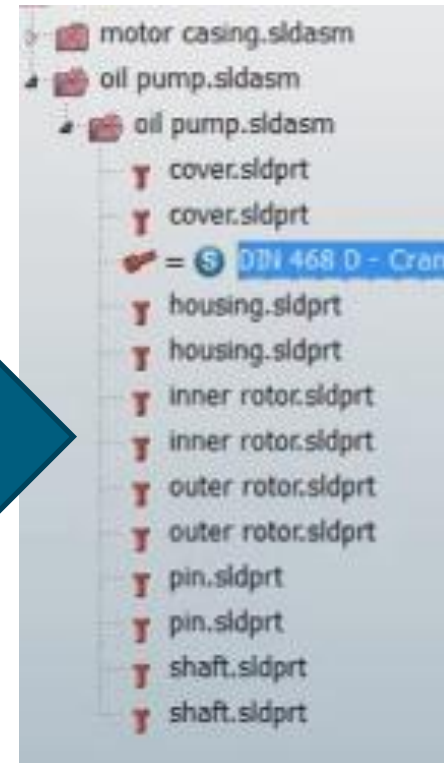
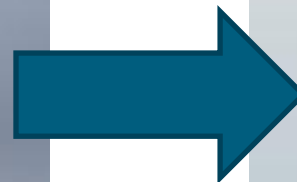
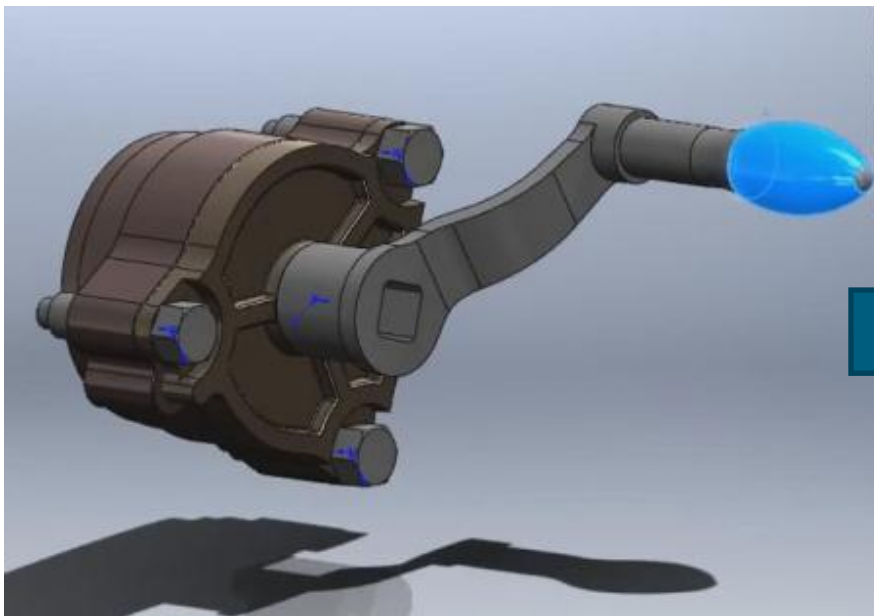


Purchineering Process

Step 1 – Get Structures out of CAD/PLM

CADENAS

SETTING STANDARDS



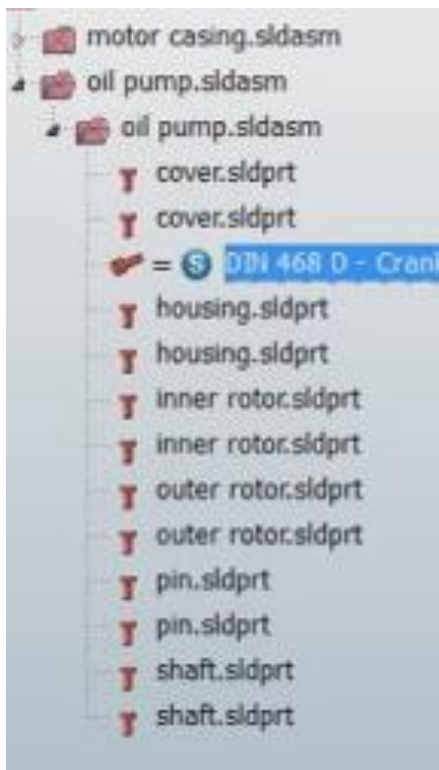


Purchineering Process

Step 2 – What Parts are Standards, Manufacturer Parts or Company Specific Parts ?

CADENAS

SETTING STANDARDS



STANDARD PARTS
(UNI)

MANUFACTURER PARTS
(CAMOZZI, ELESA, ...)

COMPANY SPECIFIC PARTS
(CAMOZZI, ELESA, ...)





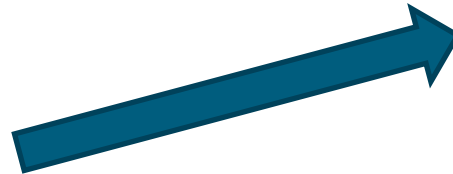
Purchineering Process

STEP 3 Operations can be done by different people including PURCHASE department

CADENAS

SETTING STANDARDS

STANDARD PARTS
(UNI)



Which supplier can deliver this standard ?

MANUFACTURER PARTS
(CAMOZZI, ELESA, ...)

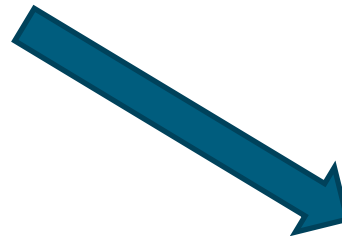


Can this manufacturer also deliver In ASIA ?

Does this components fullfill my ROHS compliancy ?

What is the cost of this part ?

COMPANY SPECIFIC PARTS
(CAMOZZI, ELESA, ...)



Does this part fit in a KANBAN process?

Make Or Buy ?



Projektauswahl
Schlagwortsuche: Suchbegriff(e) für Volltextsuche in allen Katalogen
Hersteller filter: Herstellername

Manufacturer Overview

Version

- Kataloge
 - Klassen
 - Suche
 - Favoriten
 - Verlauf
- Kataloge
 - Architektur Nemetschek -
 - Bett -
 - CADENAS Bausteine -
 - Camst 150 -
 - GeoSearch -
 - GeoSearch2 -
 - Haus Kongigurator/Texturen -
 - Interactive Sales Konfigurator -
 - Konturen -
 - Negativ Koerper -
 - Norm -
 - Smiley -
 - Spezialschrauben -
 - Topologie Katalog -
 - Videos -
 - Wii -
 - A.Borrelly
 - A4Hydrauliek
 - ABB
 - ABB Automation
 - ABB Control Products
 - ABB-MC
 - Accurate Inc.
 - ACE Stoßdämpfer
 - ACME
 - Advantec
 - Aerospace
 - Afag
 - Agathon
 - agru
 - AHP Merkle
 - Albion
 - Alenia Aeronautica
 - Alfa Laval

Symbole	Details					
- Architektur Ne... 24.10.2007	- Bett -	- CADENAS Baust... 23.07.2003	- Camst 150 - 23.08.2010	- GeoSearch - 08.02.2006	- GeoSearch2 - 22.09.2011	- Haus Kongigura... 01.10.2003
- Interactive Sale... 17.02.2010	- Konturen - 17.06.2011	- Negativ Koerper... 30.04.2002	- Norm - 08.11.2011	- Smiley - 08.11.2011	- Spezialschraub... 12.04.2010	- Topologie Katal... 28.03.2011
- Videos - 02.09.2010	- Wii - 18.09.2009	A.Borrelly 08.11.2010	A4Hydrauliek 08.11.2010	ABB 27.05.2011	ABB Automation 09.05.2011	ABB Control Prod... 08.07.2011
ABB-MC 09.11.2010	Accurate Inc. 20.04.2011	ACE Stoßdämpfe... 11.11.2010	ACME 08.11.2010	Advantec 14.02.2011	Aerospace 25.09.2008	Afag 21.06.2011
Agathon 28.06.2011	agru 23.10.2010	AHP Merkle 20.04.2011	Albion 13.06.2011	Alenia Aeronautic... 29.09.2008	Alfa Laval 29.06.2011	Alfatec 08.11.2010



**THANK YOU FOR YOUR
ATTENTION
HAVE A NICE DAY**

Dipl.-Ing. (FH) JÜRGEN HEIMBACH, CEO

Phone.: +49 (0) 821 2 58 58 0 - 0

E-Mail: J.Heimbach@cadenas.de